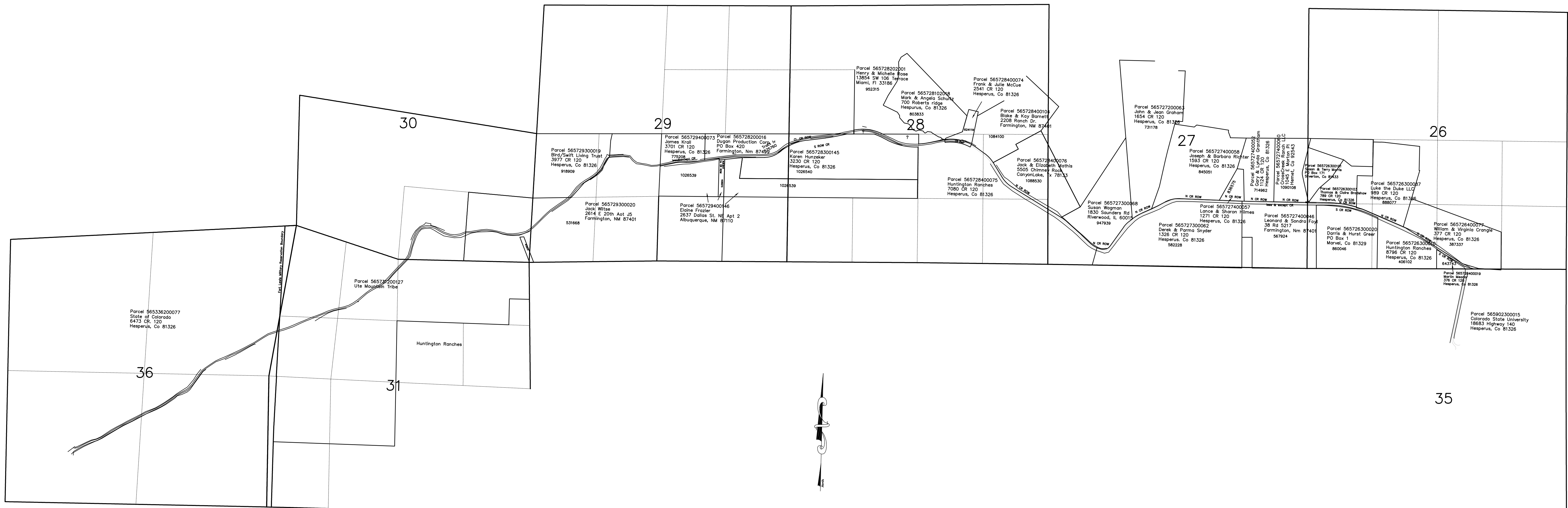


County Rd 120/Hay Gulch corridor  
 Ownership Illustration  
 Located in Sections 26, 27, 28, 29, 30, 31 & 35  
 T35N, R11W, N.M.P.M.  
 and Section 36, T35N, R12W, N.M.P.M.  
 La Plata County Colorado



© 2015 Gibbons - NBQ Inc. All rights reserved. This plan may not be copied or modified without written permission of Gibbons - NBQ Inc.

<b>Gibbons - NBQ Inc.</b>		
fka Ernst Engineering Co. Inc.		
P.O. Box 3178 DURANGO, CO. 81320		
County Rd 120/Hay Gulch corridor Ownership Illustration Located in Sections 26, 27, 28, 29, 30, 31 & 35 T35N, R11W, N.M.P.M. and Section 36, T35N, R12W, N.M.P.M. La Plata County Colorado		
Job: Hay Gulch	Drawn by: GW	1
Checked by: FG	Rev: 9-1-15	
Scale: 1" = 1000'	Date: Aug. 27, 2015	